

ACOMA TOWNSHIP

Each township has six files containing six sections in each, and one file containing all 36 sections.

Acoma01to06.pdf

Acoma07to12.pdf

Acoma13to18.pdf

Acoma19to24.pdf

Acoma25to30.pdf

Acoma31to36.pdf

AcomaAll36.pdf

The points are listed starting with the point above the SE corner and continuing in a counter-clockwise rotation around the section. This normally begins with the East point, Northeast, then North, but may also include Witness Corners, and/or Meander Corners.

Definitions

Witness Corner: A witness corner “stands in” when the true corner cannot be monumented or occupied because of difficult terrain or obstruction of the corner sight. The witness corner must be on the section line and is usually 5 or 10 chains away from the true corner.

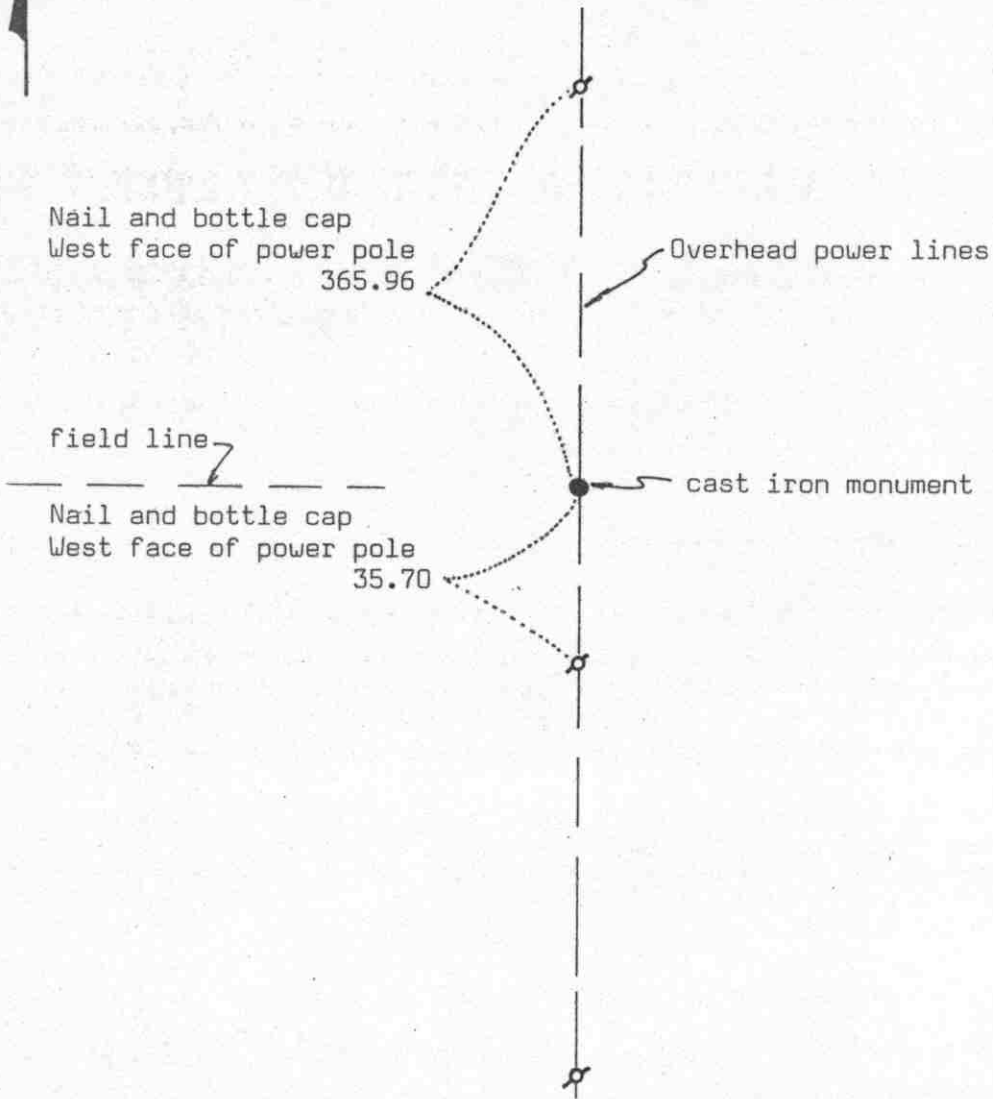
Meander Corner: The intersection of a township, range, or section line and the banks of a navigable stream or meandering body of water.

Certificate of Location of Government Corner



SKETCH OF REFERENCE TIES

(NO SCALE)



Statement of evidence relative to this corner location on sheet 2

I hereby certify that this document was prepared by me or under my direct supervision.

Willard Pellinen
Willard Pellinen
McLeod County Surveyor
License No. 9626

Date 3/30/89

OFFICE OF THE COUNTY RECORDER
MCLEOD COUNTY, MINNESOTA.

I hereby certify that this document was filed in this office at 3 o'clock P.M. on the 6th day of April, 19 89.

Carmen Doolie, County Recorder

By _____, Deputy

Document No. 227616

Certificate of Location of Government Corner

This corner was originally set in 1855 by John Ryan of the Government Land Office. He set a post with reference ties to 2 bearing trees.

1917. E. L. Higgins' survey notes show this corner to be 2547 south of an iron monument at the meander corner No. 40.

December, 1968. McCombs Knutson Associates, Dickman Knutson, County Surveyor, found a 2 inch diameter iron pipe 2542.03 feet north of an iron monument found at the meander corner. This pipe was on a power pole line running north and south and in line with a field line running west.

November 11, 1987. We measured the east line of Section 6 and found the east quarter corner gone. We reset an iron pipe at the distances shown on MKA surveys.

December 9, 1988, we took reference ties to the iron pipe and will set a cast iron monument in the spring.

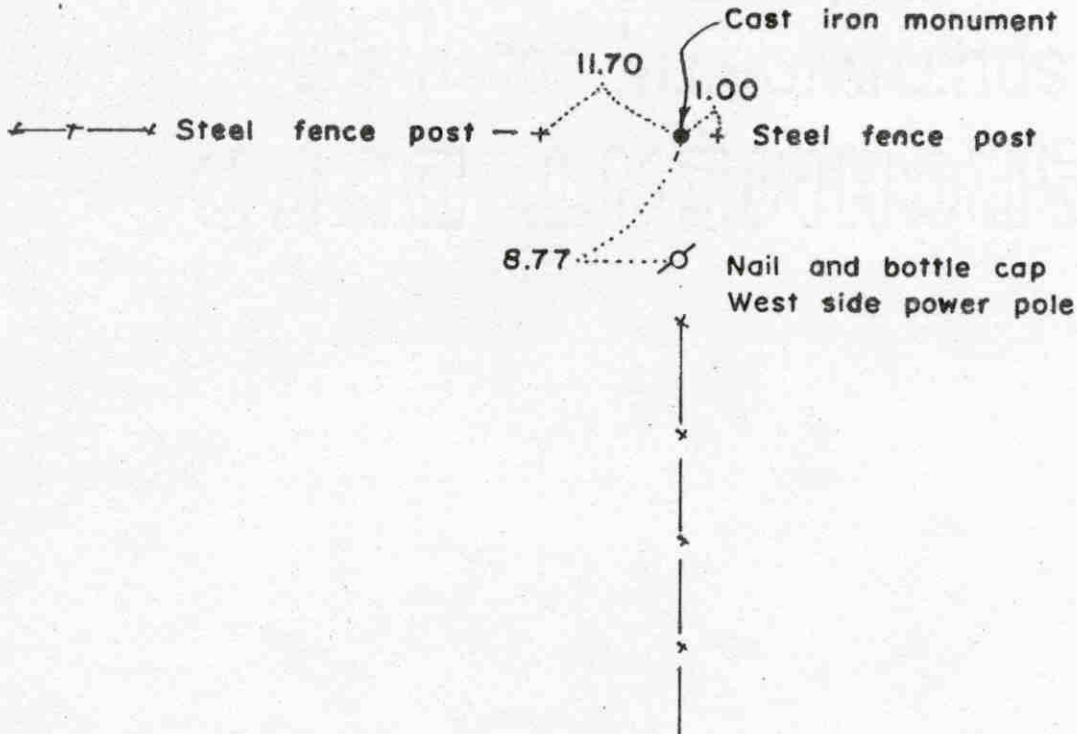
We believe the 2 inch diameter iron pipe found in 1968 had perpetuated the correct location of the quarter corner.

We measured 2676.98 feet to the southeast corner and 2677.35 feet to the northeast corner of Section 6.

Certificate of Location of Government Corner



SKETCH OF REFERENCE TIES
(NO SCALE)



Statement of evidence relative to this corner location on sheet 2

I hereby certify that this document was prepared by me or under my direct supervision.

Willard Pellinen
Willard Pellinen
McLeod County Surveyor
License No. 9626

Date 2/6/89

OFFICE OF THE COUNTY RECORDER
MCLEOD COUNTY, MINNESOTA.

I hereby certify that this document was filed in this office at 3 o'clock P.M. on the 9th day of Feb, 19 89.

Carmen Ostlie, County Recorder
By _____, Deputy

Document No. 226884

NORTHEAST _____ corner, Section 1, Township 117 North, Range 30 West

Certificate of Location of Government Corner

This corner was never set by the Government in the original survey because it fell in a Lake. In 1855, John Ryan of the Government Land Office set a meander corner 38.40 chains (2534.4 feet) north of the east quarter corner of Section 1.

1914 survey by E.L.Higgins shows an iron pin at the meander corner. His distance from the east quarter corner was 2547 feet.

In December 1968, we found a 1 inch diameter iron pin 2542.03 feet north of the east quarter corner and in January, 1969, we found a 1 inch diam. iron pin 135.32 feet north of the meander corner in the dry lake bed in line with a fence to the west and south. Mr. Art McRaith, 77 years old, in the Southeast of Sec. 36, 118, 30, all his life, said these fences are on the section lines and Mr. Arthur Radunz, 63 years old, and in the Northeast Quarter of Sec. 1 since 1936 agrees. We set a cast iron monument in place of the found iron pin at the NE corner. In August, 1988, we measured the east line of Section 1, and had a distance of 2677.35 feet from the northeast corner to the east quarter corner and a distance of 2676.98 feet from the east quarter corner to the southeast corner of Section 1, compared with the government distance of 2640.00 between each corner.

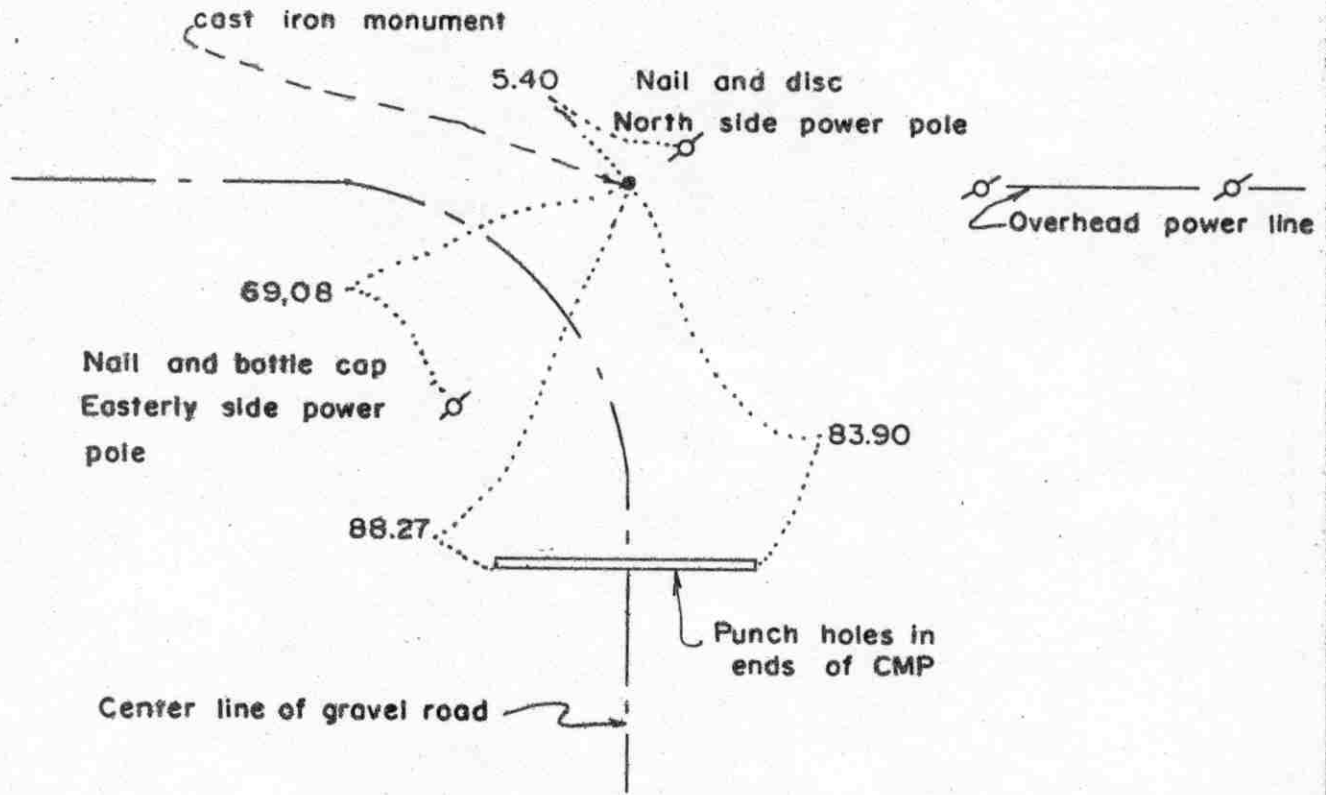
There being no evidence to the contrary, we accept the iron pin found at the northeast corner (now a cast iron monument) as the true northeast corner of Section 1.

Certificate of Location of Government Corner



SKETCH OF REFERENCE TIES

(NO SCALE)



Statement of evidence relative to this corner location on sheet 2

I hereby certify that this document was prepared by me or under my direct supervision.

Willard Pellinen
Willard Pellinen
McLeod County Surveyor
License No. 9626

Date 2/6/89

OFFICE OF THE COUNTY RECORDER
MCLEOD COUNTY, MINNESOTA.

I hereby certify that this document was filed in this office at 3 o'clock P.M. on the 9th day of Feb, 1989.

Carmen Ostlie, County Recorder
By _____, Deputy

Document No. 226885

Certificate of Location of Government Corner

This corner was originally established by John Ryan of the Government Land Office in 1855 and was monumented by a wood post and was referenced to 2 bearing trees.

In February, 1973, we talked with Mr. Art McRaith, 77, in the Southeast Quarter of Section 36, all his life. He said power pole line to the east and center line of road to the south are on the section and $\frac{1}{4}$ section lines. Mr. Arthur Radunz, 63, who has lived in the Northeast Quarter of Section 1 since 1936, agrees.

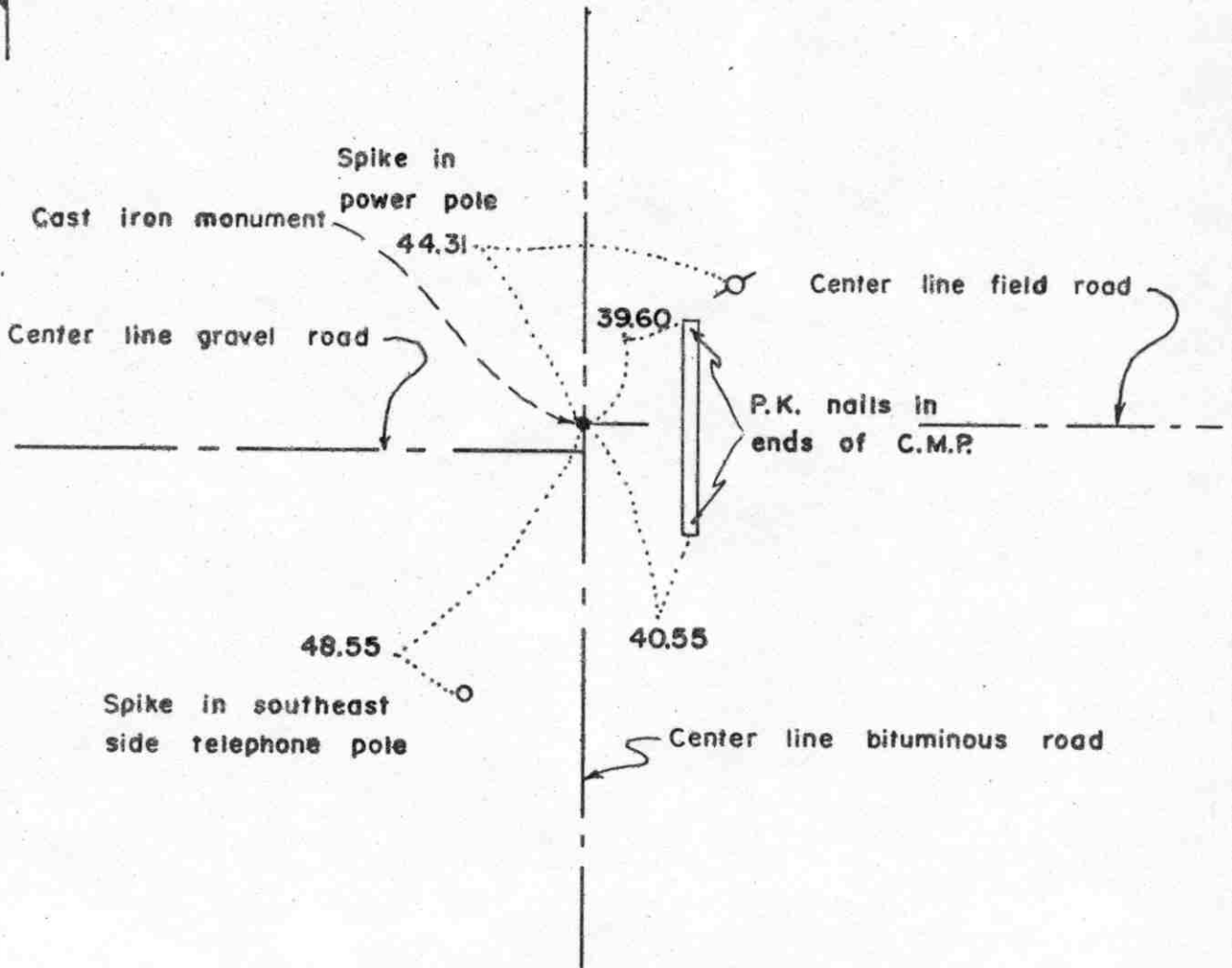
On August 21, 1973, we found a $\frac{3}{4}$ inch diam. iron pipe, $2\frac{1}{2}$ feet long, at the intersection of the power pole line and center line of the road. The pipe was in the road ditch and was bent. We tied off the bottom of the pipe and replaced it with a cast iron monument. It seemed as if the pipe had been bent when the ditch was dug.

On November 21, 1987, we measured the north line of Section 1 electronically and had a distance of 2650.00 feet to the northwest corner and 2646.50 feet to the northeast corner of Section 1, only 1.75 feet of being half way between section corners.

We accept this location as being the true north quarter corner of Section 1 as having been perpetuated by the iron pipe.

Certificate of Location of Government Corner

SKETCH OF REFERENCE TIES
(NO SCALE)



Statement of evidence relative to this corner location on sheet 2

I hereby certify that this document was prepared by me or under my direct supervision.

Willard Pellinen
Willard Pellinen
McLeod County Surveyor
License No. 9626

Date 2/5/89

OFFICE OF THE COUNTY RECORDER
MCLEOD COUNTY, MINNESOTA.

I hereby certify that this document was filed in this office at 3 o'clock P.M. on the 9th day of Feb, 1989.

Carmin Ostlie, County Recorder
By _____, Deputy

Document No. 226887

EAST QUARTER corner, Section 2, Township 117 North, Range 30 West

Certificate of Location of Government Corner

This corner was originally set by D. Langton of the Government Land Office in 1856. He set a post and referenced it to 2 bearing trees.

In 1974, R.C.M. dug for this corner and they found a 12 inch stone down $4\frac{1}{2}$ feet below the road surface and they also found pieces of 2 wood posts beside the stone. They set an iron pipe over the stone on the surface of the road.

In July, 1975, we replace the iron pipe with a McLeod County cast iron monument. This corner is in the center of the north-south road and in line with the center line of a field road running east.

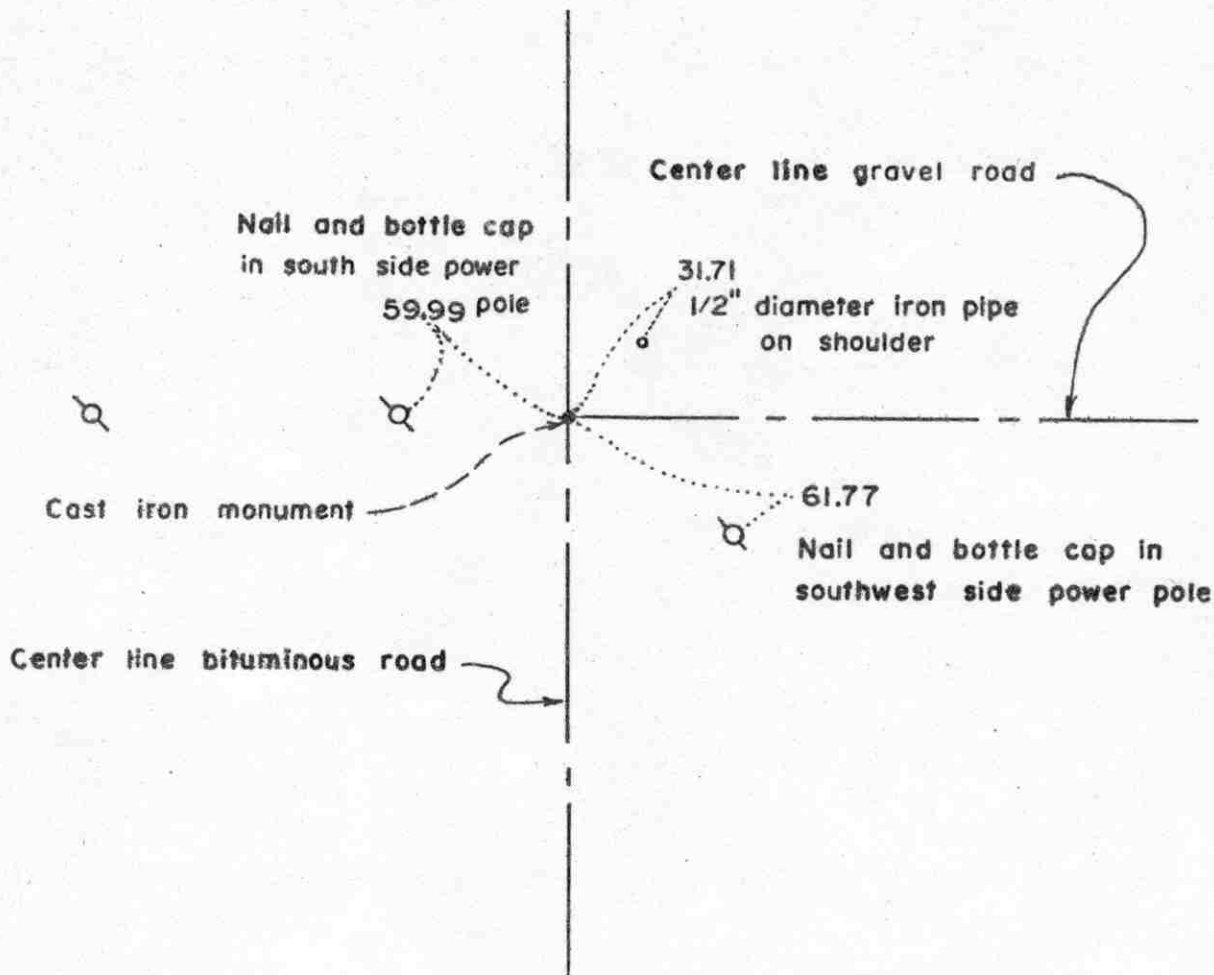
On June 13, 1988, we checked the reference ties to the corner and found them good.

We feel the stone found by RCM has perpetuated the location of the true east quarter corner of Section 2.

Certificate of Location of Government Corner



SKETCH OF REFERENCE TIES
(NO SCALE)



Statement of evidence relative to this corner location on sheet 2

I hereby certify that this document was prepared by me or under my direct supervision.

Willard Pellinen
Willard Pellinen
McLeod County Surveyor
License No. 9626
Date 2/5/89

OFFICE OF THE COUNTY RECORDER
MCLEOD COUNTY, MINNESOTA.

I hereby certify that this document was filed in this office at 3 o'clock P.M. on the 9th day of Feb., 19 89.

Carmen Costello, County Recorder
By _____, Deputy
Document No. 226886

NORTHEAST

corner, Section 2, Township 117 North, Range 30 West

Certificate of Location of Government Corner

This corner was originally set by John Ryan of the Government Land Office. He set post and took reference ties to 4 bearing trees, 3 cherry trees and 1 aspen.

In December, 1972, we found a T-bar iron monument at the center line intersection of roads north, south and east. We took reference ties to the monument.

In June, 1979, we took new reference ties, all old ties destroyed.

In November, 1987, all but one of the reference ties had been destroyed. We dug up the monument, down 1 foot below the bituminous surface, and took additional ties.

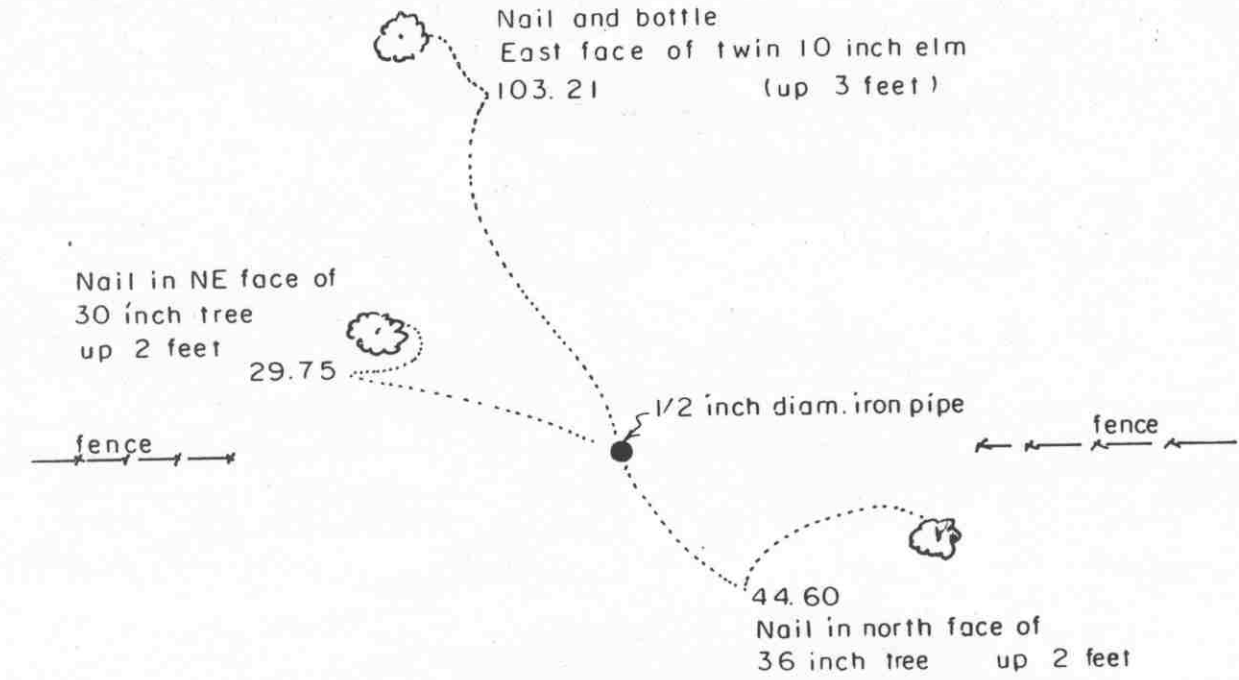
We accept the location of the T-bar monument we found in 1972 as the true northeast corner of Section 2. It fits the occupation lines, center lines of the roads and a field line to the west, and has been accepted as the correct corner by other surveyors.

NORTH QUARTER corner, Section 2, Township 117 North, Range 30 West

Certificate of Location of Government Corner

SKETCH OF REFERENCE TIES
(NO SCALE)

SECTION 35 T.118 R.30



SECTION 2, T. 117 R. 30

Statement of evidence relative to this corner location on sheet 2

I hereby certify that this document was prepared by me or under my direct supervision.

Willard Pellinen
Willard Pellinen
McLeod County Surveyor
License No. 9626

Date Feb 20, 1993

OFFICE OF THE COUNTY RECORDER
MCLEOD COUNTY, MINNESOTA.

I hereby certify that this document was filed in this office at 9 o'clock A. M. on the 4th day of March, 19 93.

Armon Otis Quader, County Recorder

By _____, Deputy

Document No. 250787

Certificate of Location of Government Corner

This corner was originally set by the government in 1855.

On December 23, 1972, McCombs Knutson Associates (Dickman Knutson, County Surveyor) found a $2\frac{1}{2}$ inch diameter iron pipe $5\frac{1}{2}$ feet north of a fence corner. Fences running south and east.

February 15, 1973. Lawrence Ebert, 58 years old, in the Southeast Quarter of Section 35, T118, R30 since 1948, says pasture fence running east from the corner doesn't mean anything as far as section lines are concerned. Ebert is renting land on the south side of the section line. Land on both sides of the county line used to belong to 1 farm before O'Fallon brothers and sisters split it up. Mr. Ebert's wife is an O'Fallon sister.

1974. Rieke Carroll Muller Associates used the iron pipe as the north quarter corner is a survey in the Northeast Quarter of Section 2.

February 24, 1989. We found the iron pipe in good condition and took new reference ties.

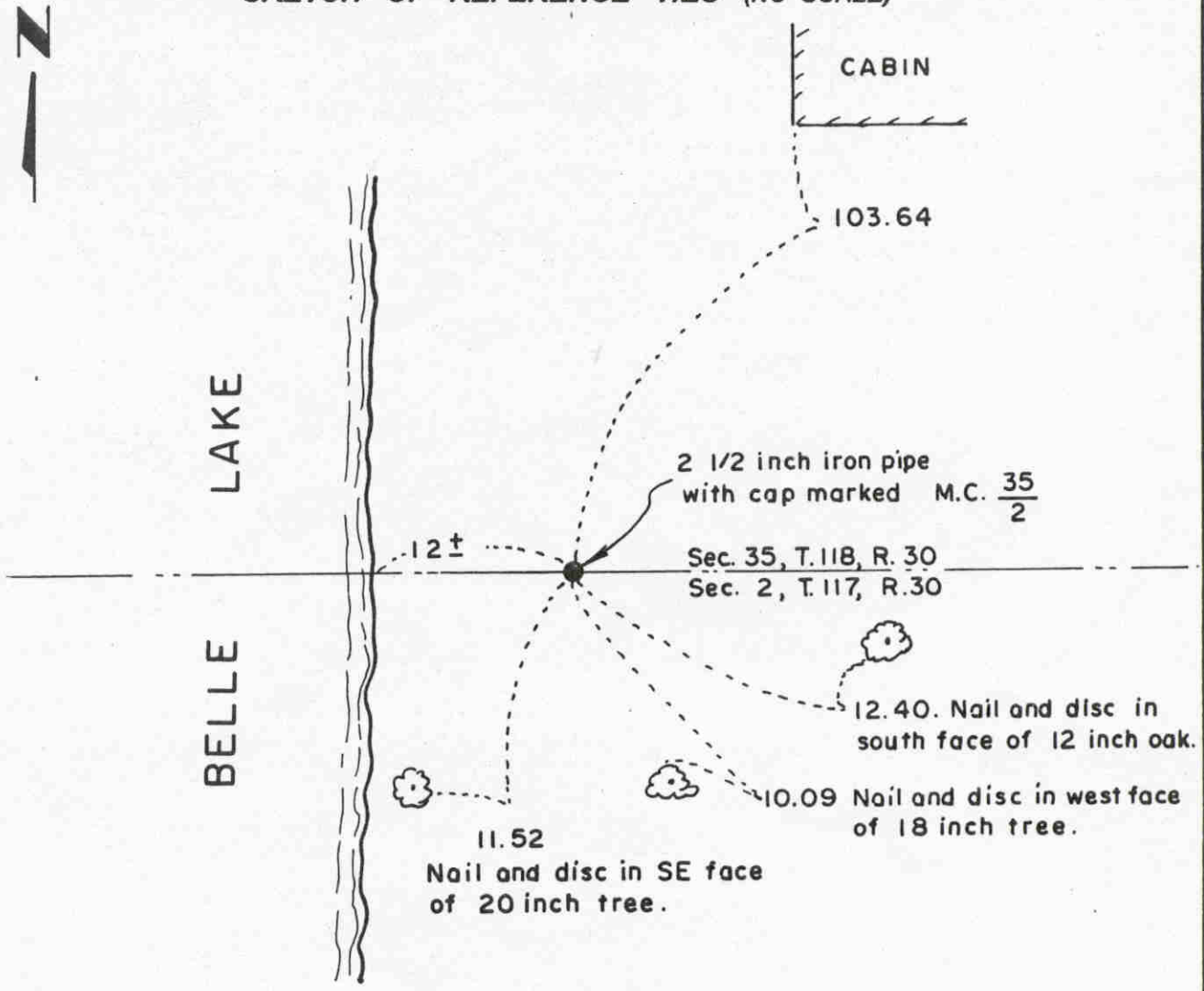
We don't know who set the iron pipe, but there being no evidence to the contrary, we accept it as the correct corner.

December 28, 1992. We found the iron pipe had been plowed out. We reset the corner using our section measurements and took new reference ties. We set a $\frac{1}{2}$ inch iron pipe with a $\frac{1}{2}$ inch iron pipe below.

Certificate of Location of Government Corner

Point along north line of ~~corner~~ Section 2, Township 117 North, Range 30 West

SKETCH OF REFERENCE TIES (NO SCALE)



Statement of evidence relative to this corner location on sheet 2

I hereby certify that this document was prepared by me or under my direct supervision.

Willard Pellinen
 Willard Pellinen
 McLeod County Surveyor
 License No. 9626.

Date Dec. 20, 1995.

OFFICE OF THE COUNTY RECORDER MCLEOD COUNTY, MINNESOTA

I hereby certify that this document was filed in this office at 9 o'clock A.M. on the 9th day of January 19 96.

Carmen Estelle Muller, County Recorder

By Charleen Engelman, Deputy.

Document No. 270214

Certificate of Location of Government Corner

**Point along line, Section 2, Township 117 North, Range 30 West
Along north line of Section 2, east of Belle Lake.**

1972. Dickman Knutson found a 2 1/2 inch diameter iron pipe marked Meander Corner along the north line of Section 2 east of Belle Lake. He took available reference ties. Prorating measured distance along north line, meander corner should be about 49 feet farther east.

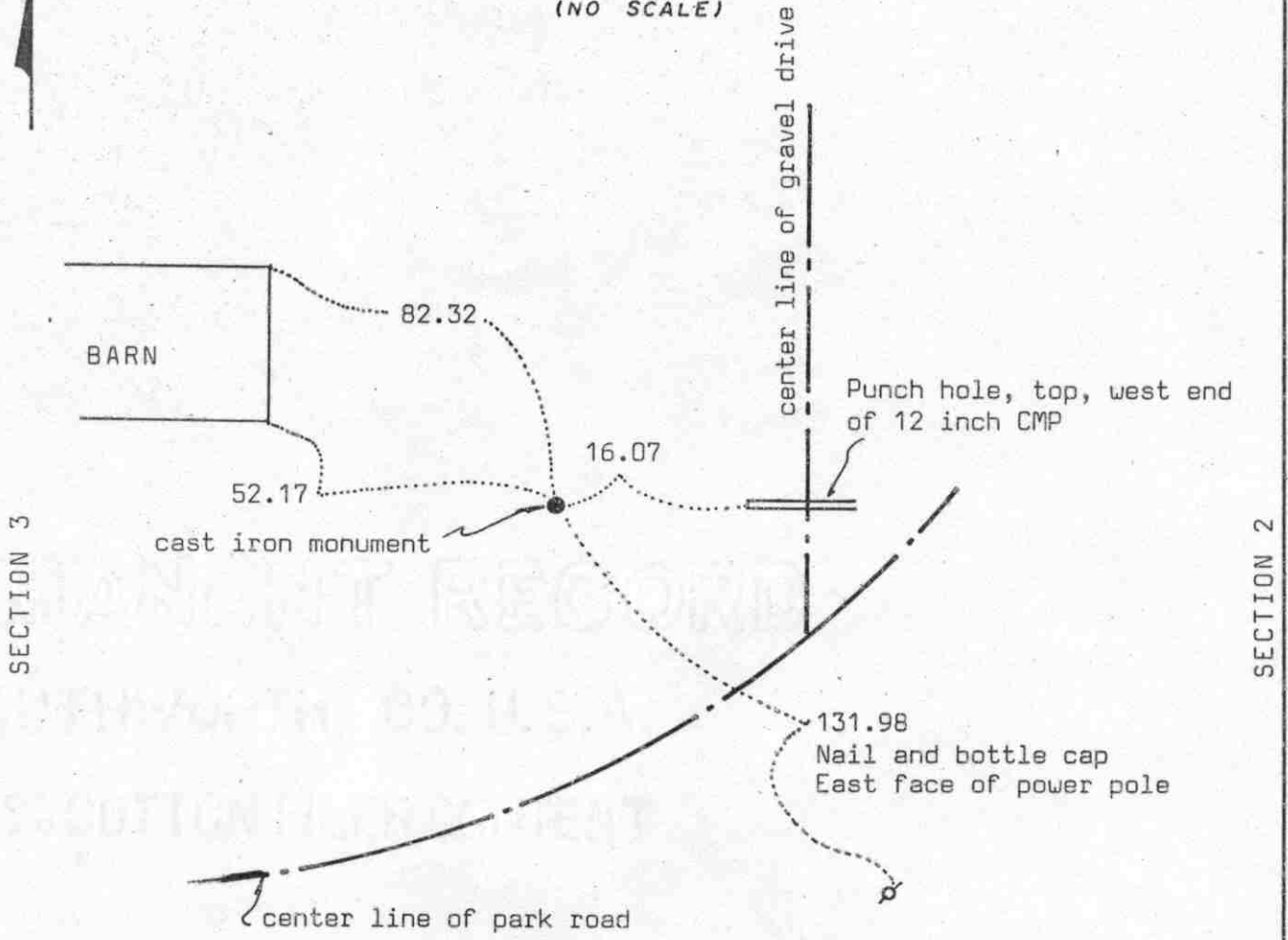
1989. We checked the ties.

Certificate of Location of Government Corner



SKETCH OF REFERENCE TIES

(NO SCALE)



Statement of evidence relative to this corner location on sheet 2

I hereby certify that this document was prepared by me or under my direct supervision.

Willard Pellinen
Willard Pellinen
McLeod County Surveyor
License No. 9626

Date 4/7/90

OFFICE OF THE COUNTY RECORDER
MCLEOD COUNTY, MINNESOTA.

I hereby certify that this document was filed in this office at 4 o'clock P.M. on the 2nd day of May 1990.

Carmen Ostlie, County Recorder

By _____, Deputy

Document No. 233095

Certificate of Location of Government Corner

1856. This corner was established by the General Land office in 1856. D.L.Langton set a post and had reference ties to 2 bearing trees.

May 1977. McCombs Knutson Associates, Dickman Knutson, county surveyor, found a square 8 inch by 8 inch by 18 inch long stone down 2 feet below the ground surface at the intersection of fences running south and east. They set a cast iron monument over the stone and took reference ties.

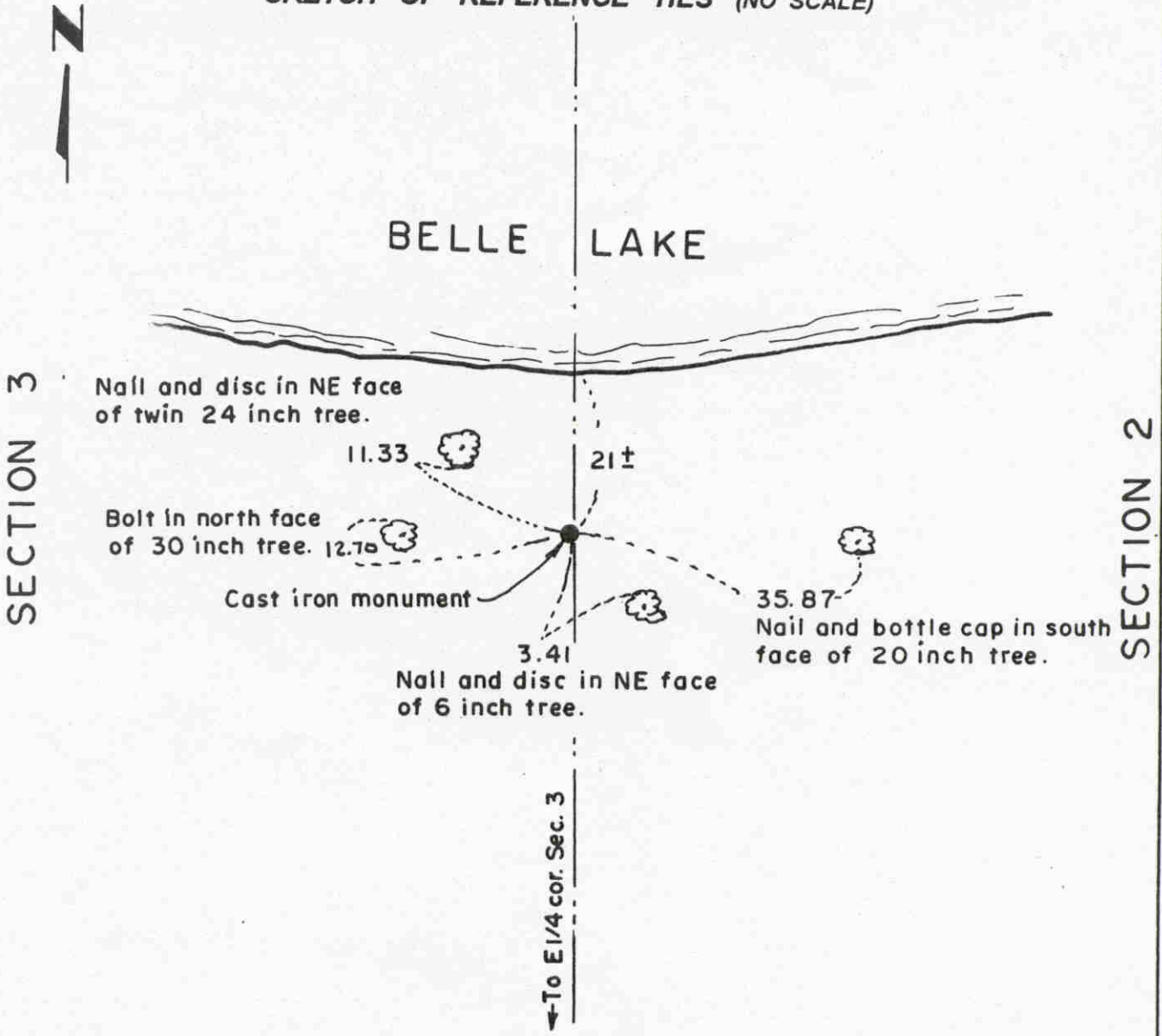
April 3, 1989. We found the cast iron monument in good condition, top flush with the ground. 2 reference ties remaining. We took additional reference ties.

We accept the stone found by Knutson as having perpetuated the correct location of the quarter corner.

Certificate of Location of Government Corner

Point along east line of ~~corner~~ Section 3, Township 117 North, Range 30 West

SKETCH OF REFERENCE TIES (NO SCALE)



Statement of evidence relative to this corner location on sheet 2

I hereby certify that this document was prepared by me or under my direct supervision.

Willard Pellinen
Willard Pellinen
McLeod County Surveyor
License No. 9626.

Date Dec. 19, 1995

OFFICE OF THE COUNTY RECORDER
MCLEOD COUNTY, MINNESOTA

I hereby certify that this document was filed in this office at 9 o'clock A.M. on the 9th day of January 19 96.

Carmen Estelle Mulder, County Recorder

By Charleen Engdmann, Deputy.

Document No. 270215

Certificate of Location of Government Corner

***Point on line, Section 3, Township 117 North, Range 30 West
(POINT ALONG EAST LINE OF SECTION 3 NORTH OF E1/4 COR SEC 3.***

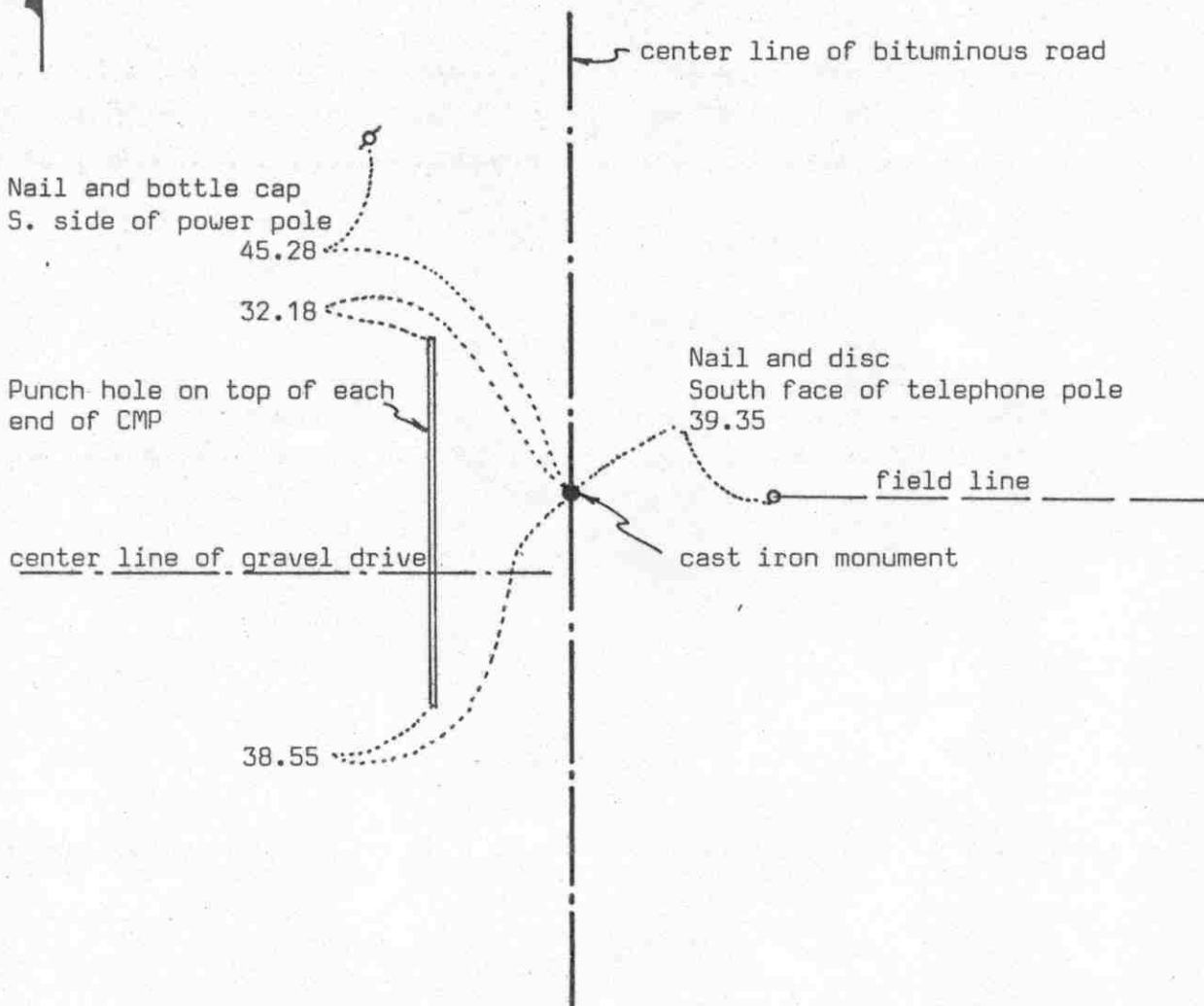
1975. Dickman Knutson, county surveyor, set a cast iron monument along the east line of Section 3, north of the east quarter corner of Section 3, south of Belle Lake, and took available ties. He prorated the distance from the north quarter corner of Section 2 to the northwest corner of Section 3. (2623.44 feet for each quarter-section.) The northeast and north quarter corners of Section 3 fall in Belle Lake.

Certificate of Location of Government Corner



SKETCH OF REFERENCE TIES

(NO SCALE)



Statement of evidence relative to this corner location on sheet 2

I hereby certify that this document was prepared by me or under my direct supervision.

Willard Pellinen

Willard Pellinen
McLeod County Surveyor
License No. 9626

Date 3/20/89

OFFICE OF THE COUNTY RECORDER
MCLEOD COUNTY, MINNESOTA.

I hereby certify that this document was filed in this office at 3 o'clock P.M. on the 6th day of April, 19 89.

Armer Ostlie, County Recorder
By _____, Deputy

Document No. 227617

Certificate of Location of Government Corner

This corner was established in 1856 by D.L.Langton of the Government Land Office. He set a post and had reference ties to 2 bearing trees.

In 1966, Roy Hansen, surveyor, found an iron pin on the center line of the road in line with a field line to the east.

On April 18, 1973, we found a spike on the surface of the road using ties from Roy Hansen notes. Below the spike we found an iron pin.

On November 13, 1973, we replaced the iron pin with a McLeod County cast iron monument and took reference ties.

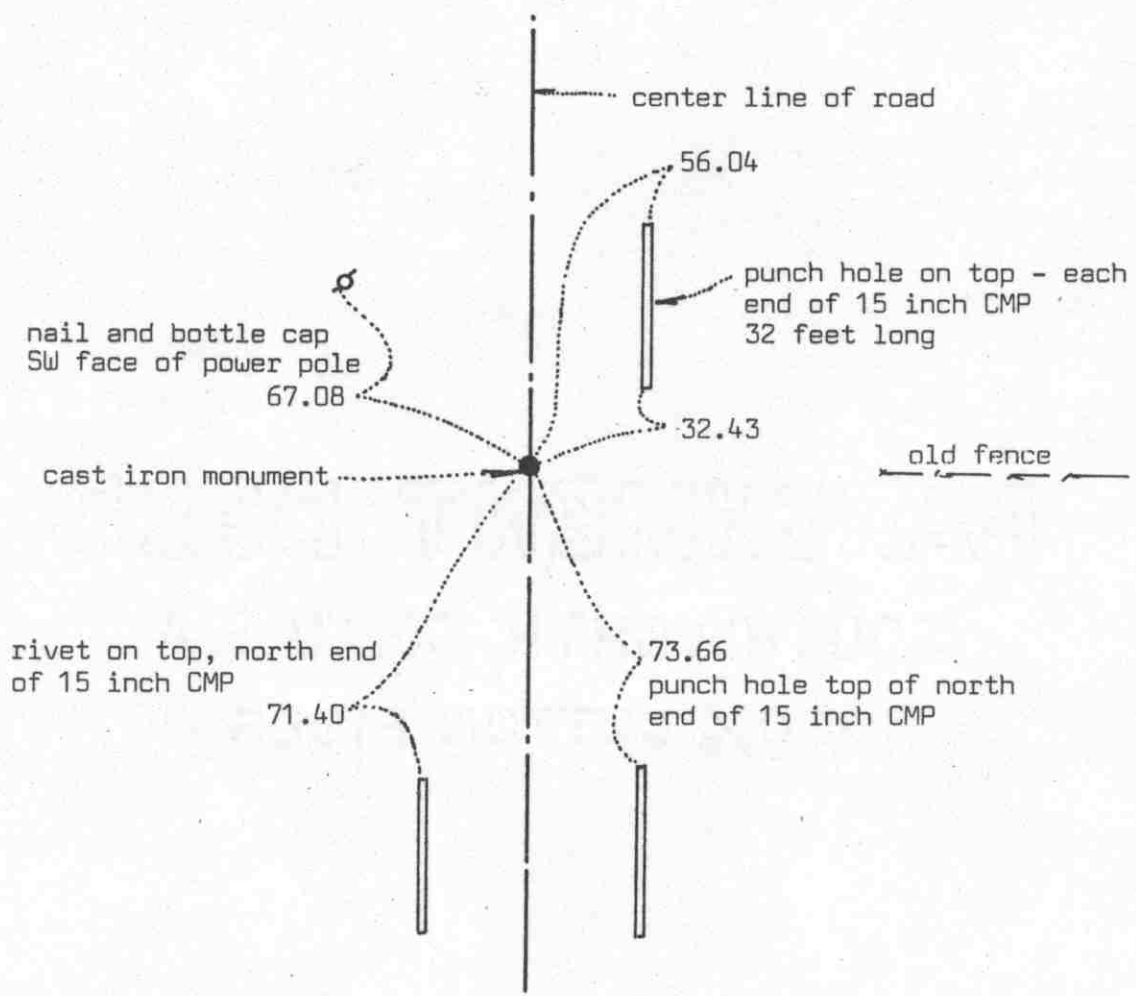
On June 13, 1988 we found the monument in good condition and the reference ties good.

This corner is within $2\frac{1}{2}$ feet of being on a proration of the government distances between the section corners.

We believe the center line of the road, the field line to the east and the found iron pin have perpetuated the correct location of the quarter corner.

Certificate of Location of Government Corner

SKETCH OF REFERENCE TIES
(NO SCALE)



Statement of evidence relative to this corner location on sheet 2

I hereby certify that this document was prepared by me or under my direct supervision.

Willard Pellinen
Willard Pellinen
McLeod County Surveyor
License No. 9626
Date 2/12/89

OFFICE OF THE COUNTY RECORDER
MCLEOD COUNTY, MINNESOTA.

I hereby certify that this document was filed in this office at 9 o'clock A.M. on the 15th day of Feb. 1989.

Carmen Ostlie, County Recorder
By _____, Deputy

Document No. 226958

Certificate of Location of Government Corner

This corner was established by John Ryan of the Government Land Office in August, 1855. He set post and had reference ties to 4 bearing trees.

Old McLeod County Highway Department field notes show the county dug for this corner but didn't find anything.

On June 20, 1974, we set a McLeod County cast iron monument on the center line of the road running north and south and in line with the westerly extension of an old fence. This point has been used as the section corner by Leonard Schoultz former Meeker County Surveyor. We took available ties.

On December 18, 1987, we found only 2 reference ties remaining. We found the top of the monument broken off and the base disturbed by road construction. We set an iron pipe at the corner, using the 2 remaining ties and took additional reference ties.

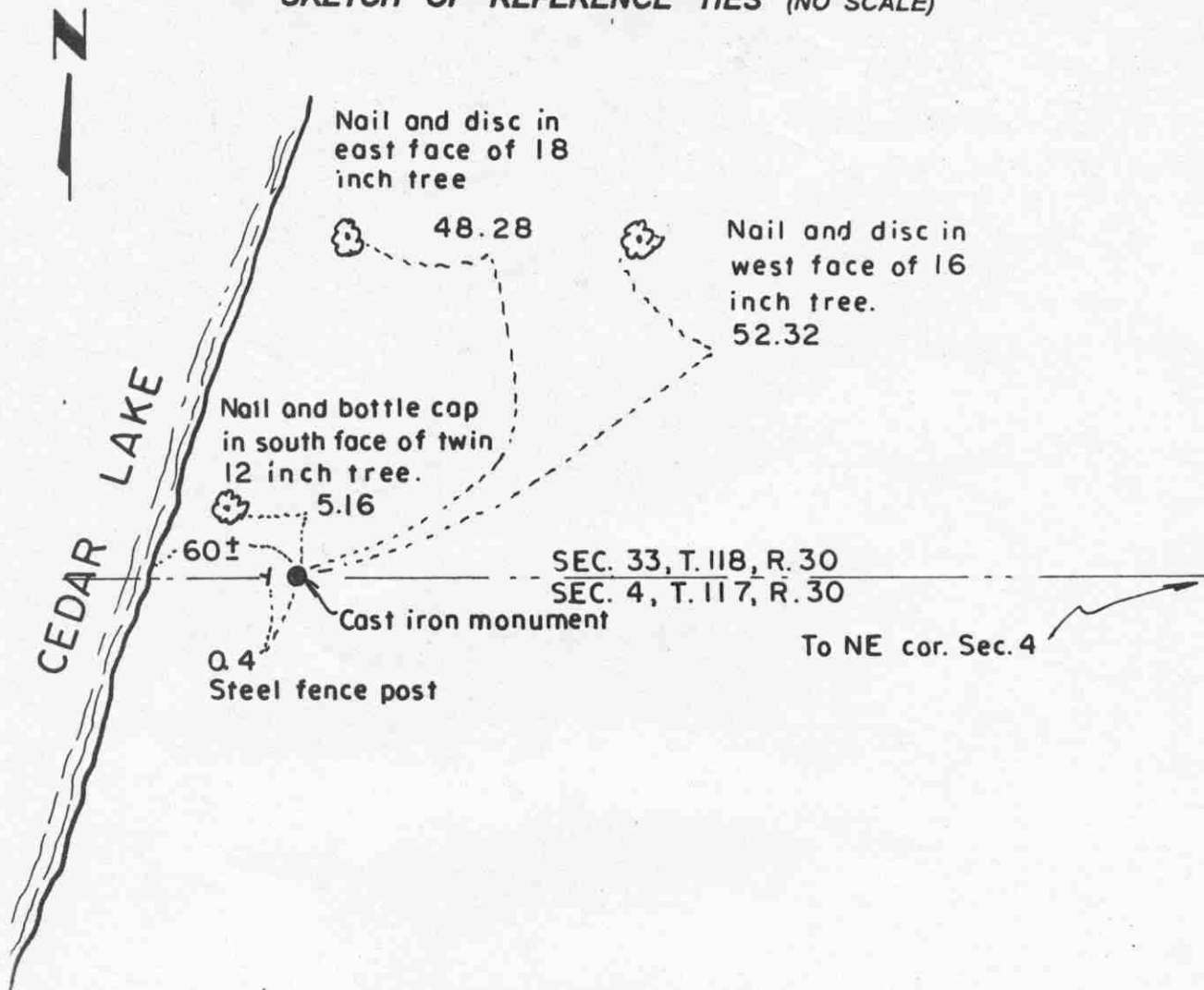
On June 27, 1988, we removed the broken monument and replaced it with a new McLeod County cast iron monument and checked the reference ties.

We feel this was an obliterated corner whose location has been perpetuated by the center line of the road and the old fence.

Certificate of Location of Government Corner

Point along north line of ~~corner~~ Section 4, Township 117 North, Range 30 West

SKETCH OF REFERENCE TIES (NO SCALE)



Statement of evidence relative to this corner location on sheet 2

I hereby certify that this document was prepared by me or under my direct supervision.

Willard Pellinen
 Willard Pellinen
 McLeod County Surveyor
 License No. 9626.

Date Dec. 19, 1995

OFFICE OF THE COUNTY RECORDER MCLEOD COUNTY, MINNESOTA

I hereby certify that this document was filed in this office at 9 o'clock A. M. on the 9th day of January, 19 96.

Carmen Estlie Mulder, County Recorder

By Charleen Engelman, Deputy.

Document No. 270216

Certificate of Location of Government Corner

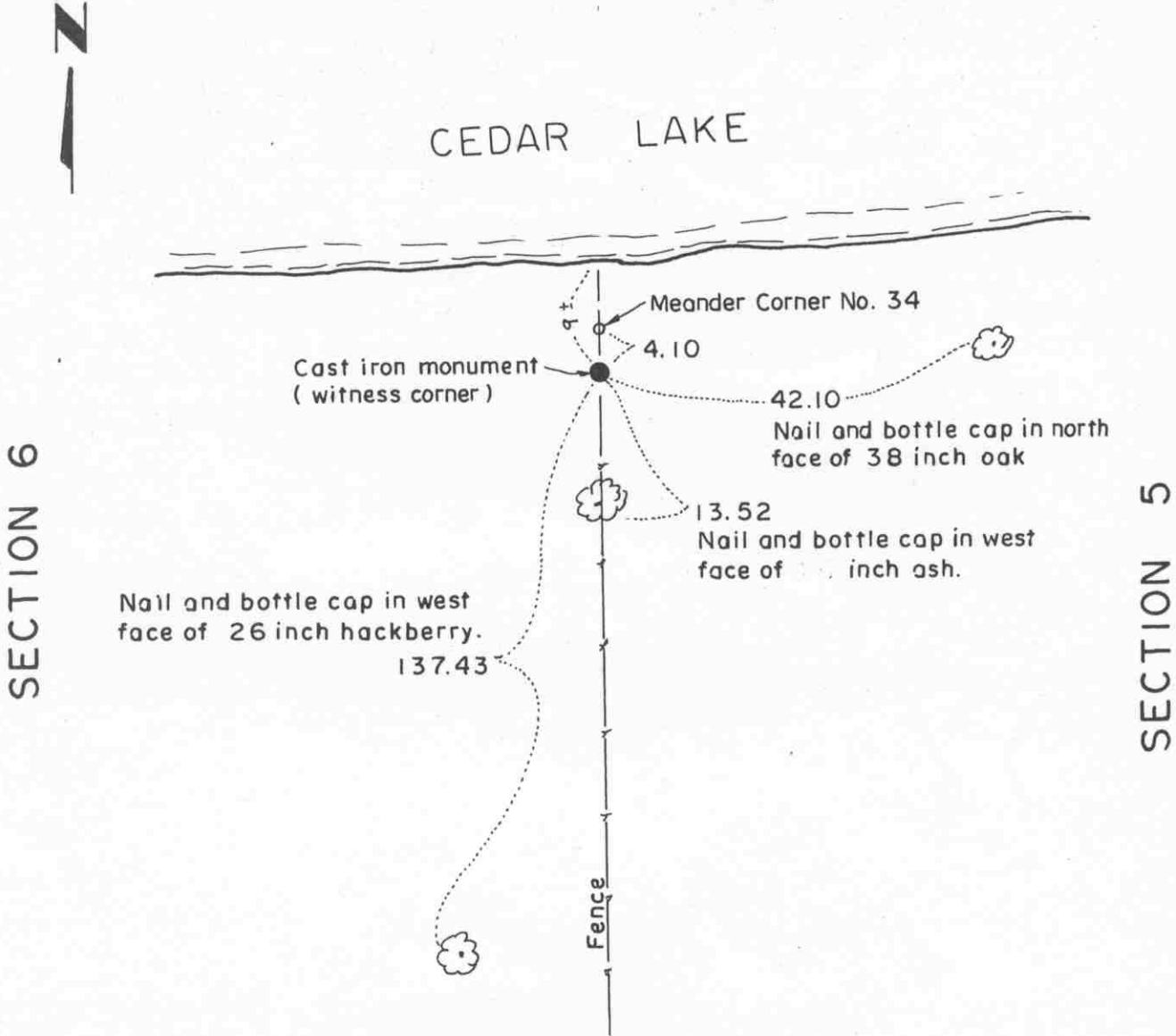
**Point on line, Section 4, Township 117 North, Range 30 West
(POINT ALONG NORTH LINE OF SECTION 4 WEST OF NE COR SEC 4.**

1974. Dickman Knutson, county surveyor, set a cast iron monument along the north line of Section 4, west of the northeast corner of Section 4, east of Cedar Lake, and took available ties. This is on line between the northeast corner of Section 4 and a point along the north line of Section 6, west of Cedar Lake.

Certificate of Location of Government Corner

Meander corner, ^{No. 34} Section 6 , Township 117 North, Range 30 West

SKETCH OF REFERENCE TIES (NO SCALE)



Statement of evidence relative to this corner location on sheet 2

I hereby certify that this document was prepared by me or under my direct supervision.

Willard Pellinen
Willard Pellinen
McLeod County Surveyor
License No. 9626.

Date July 6, 1993

**OFFICE OF THE COUNTY RECORDER
MCLEOD COUNTY, MINNESOTA**

I hereby certify that this document was filed in this office at 9 o'clock A .M. on the 9th day of January 19 96.

Carmen Estelle Mulder County Recorder

By Charlene Engelmann, Deputy.

Document No. 270217

Certificate of Location of Government Corner
Meander Corner, Section 6, Township 117 North, Range 30 West

August, 1855. This corner was originally established by the General Land Office. D.L.Langton set a post and marked a 7 inch Linden and a 5 inch ironwood for bearing trees.

September 21, 1984. Mr. Harold Hoff, who had lived in the Southeast Quarter of Section 6 all his life, said the north-south fence has been in the same location at least 60 years and has always been accepted as being along the section line. Mr. Roy Mills who farms in Sections 5 and 7 agrees with Mr. Hoff.

September 27, 1984. We set a McLeod County cast iron monument along the north-south fence near the south shore of Cedar Lake and took available reference ties.

July 10, 1989. We measured Section 6 and found the monument to be 4.10 feet south of the computed location of Meander Corner No. 34. We left the monument in place and noted on sheet 1 of the certificate that the meander corner is north of the monument.

Certificate of Location of Government Corner

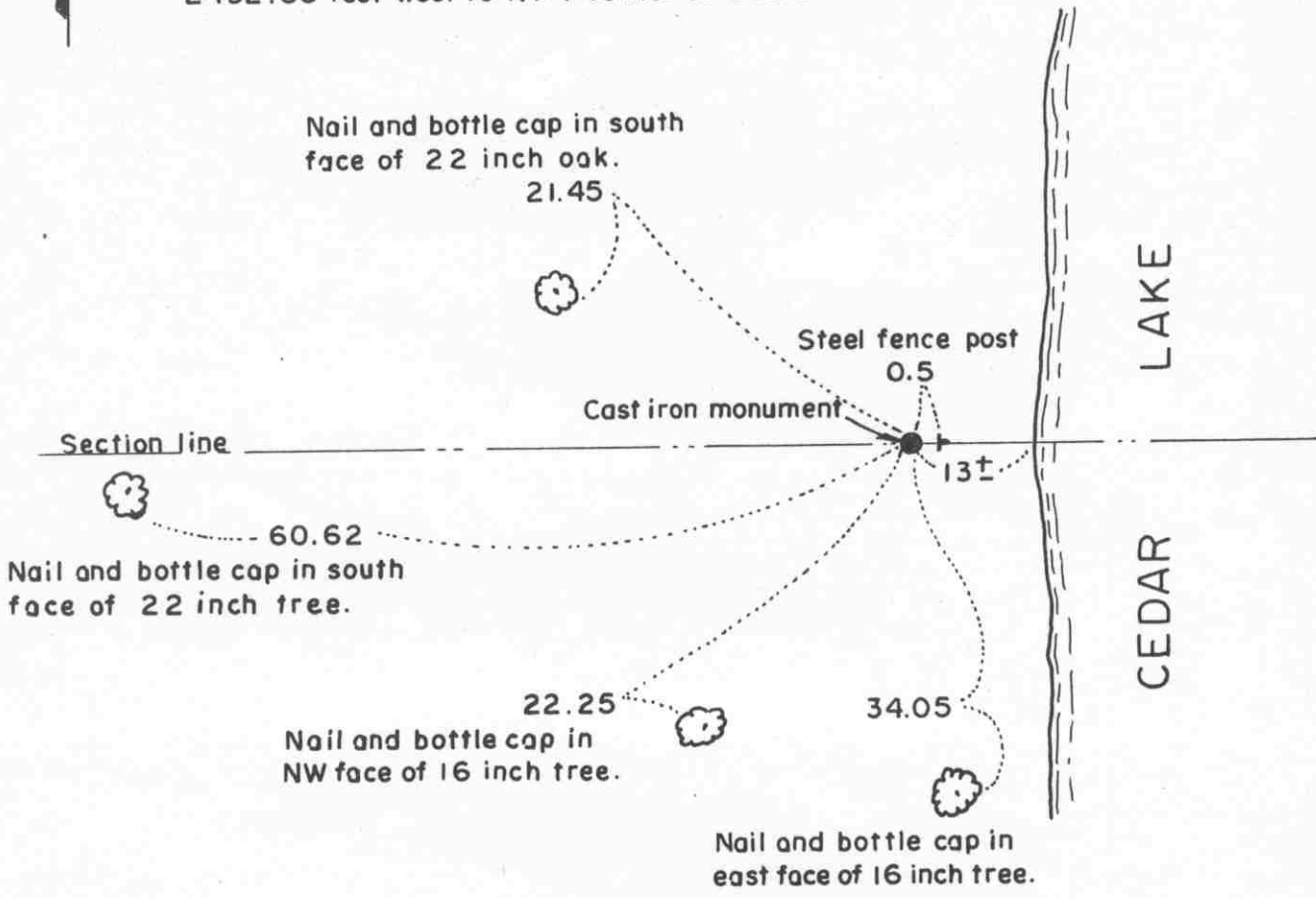
No. 35

Meander corner, Section 6, Township 117 North, Range 30 West

SKETCH OF REFERENCE TIES (NO SCALE)

SECTION 31, T. 118, R. 30

239.58 feet east to NE corner of Sec. 6. (in lake)
2432.36 feet west to N1/4 corner of Sec. 6.



SECTION 6, T. 117, R. 30

Statement of evidence relative to this corner location on sheet 2

I hereby certify that this document was prepared by me or under my direct supervision.

Willard Pellinen
Willard Pellinen
McLeod County Surveyor
License No. 9626.

Date July 6, 1993

OFFICE OF THE COUNTY RECORDER
MCLEOD COUNTY, MINNESOTA

I hereby certify that this document was filed in this office at 9 o'clock A. M. on the 9th day of January, 19 96.

Carmen Estlie Muller, County Recorder

By Charles Engelmann, Deputy.

Document No. 270218

Certificate of Location of Government Corner
Meander Corner, Section 6, Township 117 North, Range 30 West

August, 1855. This corner was originally established by the General Land Office. John Ryan set a post in a clump of oaks and marked two 14 inch oaks for bearing trees.

November, 1913. Lewis Merrill, surveyor, found an oak stake at the corner. He measured 2436.5 feet to the north quarter corner and 5112.50 feet to the northwest corner of Section 6. He set the north quarter corner on line between the found meander corner and the northwest corner.

June 20, 1974. Dickman Knutson, county surveyor, set a 1/2 inch diameter iron pipe on the easterly prolongation of the line from the northwest corner to the north quarter corner. He set the meander corner on a proration of Lew Merrill's distances along the north line of Section 6.

November 6, 1974. Knutson replaced the iron pipe with a McLeod County cast iron monument and took available reference ties.

NORTH QUARTER corner, Section 6, Township 117 North, Range 30 West

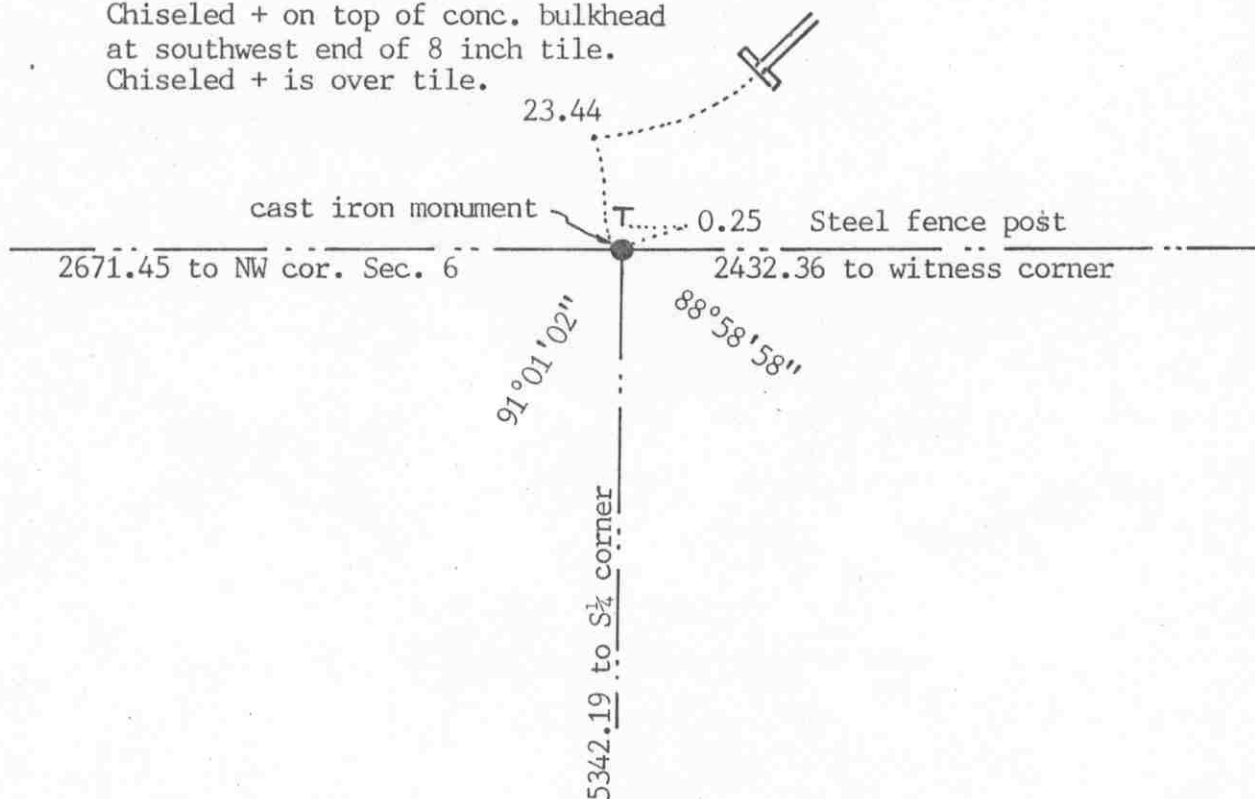
Certificate of Location of Government Corner

SKETCH OF REFERENCE TIES

(NO SCALE)

SECTION 31 T. 118 R. 30

Chiseled + on top of conc. bulkhead
at southwest end of 8 inch tile.
Chiseled + is over tile.



SECTION 6 T. 117 R. 30

Statement of evidence relative to this corner location on sheet 2

I hereby certify that this document was prepared by me or under my direct supervision.

Willard Pellinen

Willard Pellinen
McLeod County Surveyor
License No. 9626

Date Feb. 9, 1989

OFFICE OF THE COUNTY RECORDER
MCLEOD COUNTY, MINNESOTA.

I hereby certify that this document was filed in this office at 9 o'clock A.M. on the 23rd day of January, 19 96.

Carmen Potlie Mulder, County Recorder

By _____, Deputy

Document No. 270535

NORTH QUARTER corner, Section 6, Township 117 North, Range 30 West

Certificate of Location of Government Corner

November, 1913. Lewis Merrill, surveyor, set this corner on a straight line between the northwest corner of the section and Meander Corner No. 35. (west side of Cedar Lake) He set an iron monument at the northeast corner of the Southeast Quarter of the Northwest Quarter. (along the north-south quarter line of Section 6) He had a distance of 4011 feet from the south quarter corner to the monument at the northeast corner of the Southeast Quarter of the Northwest Quarter and a distance of 5358 feet from the south quarter corner to the north quarter corner. He had a distance of 2676 feet from the north quarter corner to the northwest corner.

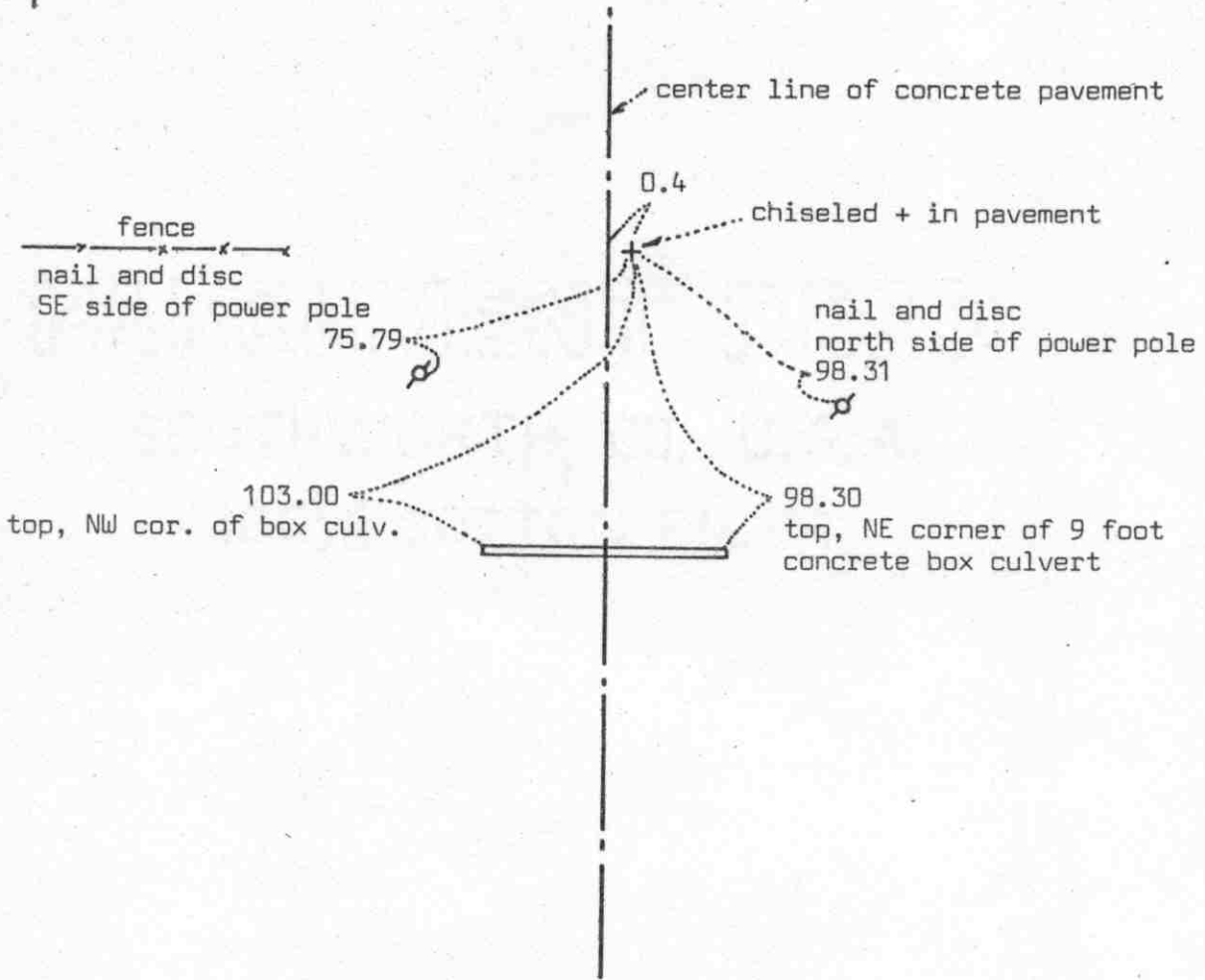
June 20, 1974. McCombs Knutson Associates (Dickman Knutson, county surveyor) set a cast iron monument at the north quarter corner on a proration of the 1913 distances from the south quarter corner. Knutson found the iron monument set by Merrill at the northeast corner of the Southeast Quarter of the Northwest Quarter. Knutson measured 4006.64 feet to this monument from the south quarter corner. Knutson set the north quarter corner on the northerly extension of the line from the south quarter corner to the found monument, a distance of 5342.19 feet from the south quarter corner. Knutson measured 2671.45 feet to the northwest corner from the north quarter corner.

December 3, 1986. The monument had been destroyed by ditch and tile construction. We set an iron pipe at the corner using the 1974 distances. We took new available reference ties.

May 8, 1987. We replaced the iron pipe with a McLeod County cast iron monument.

Certificate of Location of Government Corner

SKETCH OF REFERENCE TIES
(NO SCALE)



Statement of evidence relative to this corner location on sheet 2

I hereby certify that this document was prepared by me or under my direct supervision.

Willard Pellinen
Willard Pellinen
McLeod County Surveyor
License No. 9626
Date 2/12/89

OFFICE OF THE COUNTY RECORDER
MCLEOD COUNTY, MINNESOTA.

I hereby certify that this document was filed in this office at 9 o'clock A.M. on the 15th day of Feb. 19 89.

Carmen Ostlie, County Recorder
By _____, Deputy

Document No. 226959

NORTHWEST corner, Section 6, Township 117 North, Range 30 West

Certificate of Location of Government Corner

This corner was established in 1855 by John Ryan of the Government Land Office. He set post with trench as per instructions and had reference ties to 2 bearing trees.

1894 survey by N.Y. Taylor shows a post at this corner and he had a distance of 2661.12 feet to the west quarter corner of Section 6.

1913 survey by E.L. Higgins shows a distance of 2663.8 feet to the west quarter corner of Section 6.

State Highway No. 22 right of way map shows that they found a 2 inch square iron monument at this corner, 0.4 feet east of center line station 100+00.4.

On January 5, 1973, we chiseled an + in the concrete pavement 0.4 feet east of station 100+00.4 as per R/W map.

On November 24, 1987 we remeasured the west line of Section 6 and had a distance of 2659.43 feet for the west line of the Northwest Quarter of Section 6.

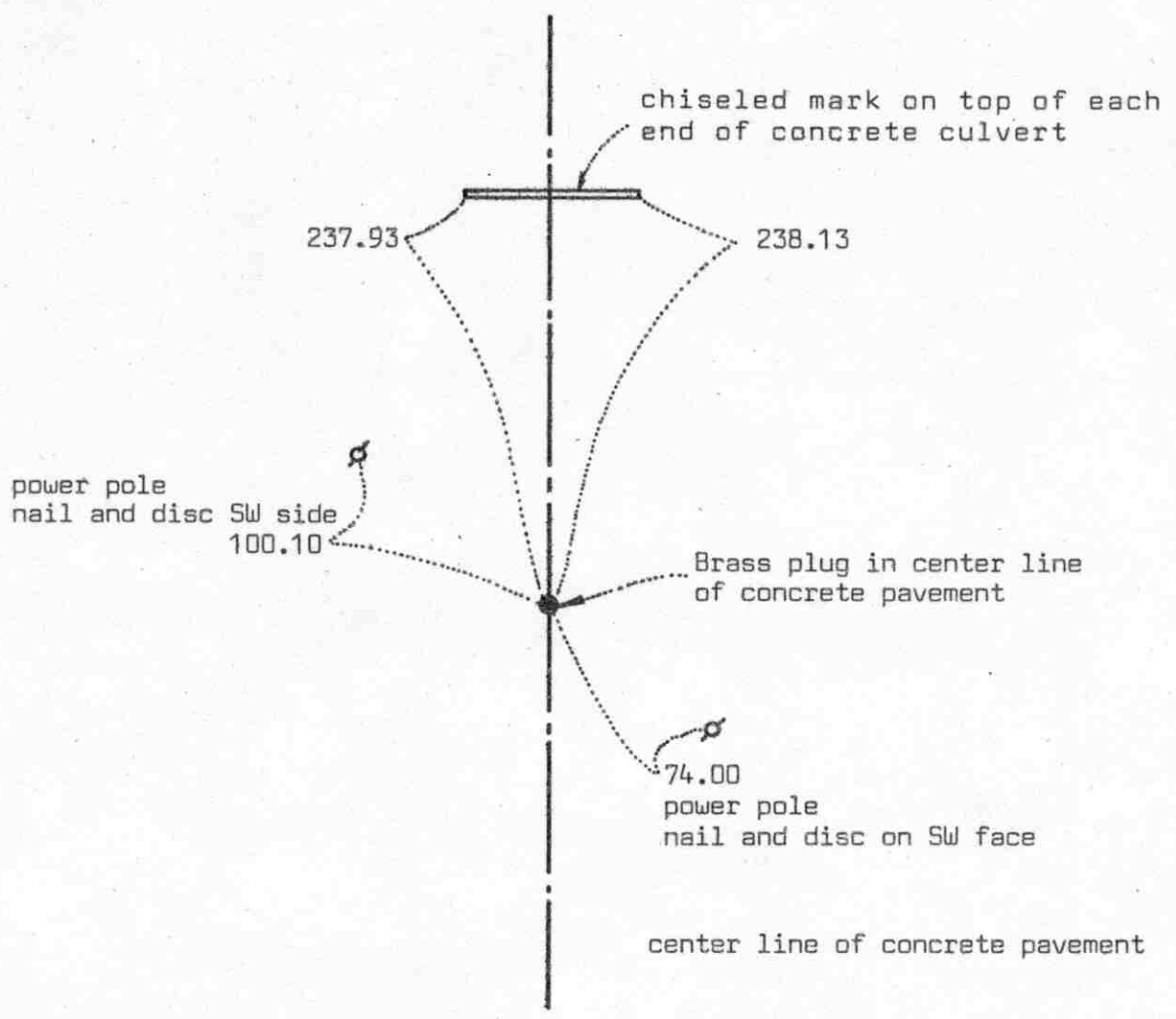
On June 27, 1988, we found the chiseled + o.k. and the reference ties good.

We feel the State Highway No. 22 center line alignment has perpetuated the true location of this corner.

Certificate of Location of Government Corner



SKETCH OF REFERENCE TIES
(NO SCALE)



Statement of evidence relative to this corner location on sheet 2

I hereby certify that this document was prepared by me or under my direct supervision.

Willard Pellinen
 Willard Pellinen
 McLeod County Surveyor
 License No. 9626
 Date 2/11/89

OFFICE OF THE COUNTY RECORDER
MCLEOD COUNTY, MINNESOTA.

I hereby certify that this document was filed in this office at 9 o'clock A.M. on the 15th day of Feb, 1989.

Carmen Jollie, County Recorder
 By _____, Deputy

Document No. 226960

WEST QUARTER corner, Section 6, Township 117 North, Range 30 West

Certificate of Location of Government Corner

This corner was established by John Ryan of the Government Land Office in August, 1855. He set post in mound as per instructions with deposit of charcoal.

1913 survey by E.L.Higgins shows a distance of 2663.8 feet to the northwest corner and 2663.8 feet to the southwest corner of Section 6.

State Highway No. 22 right of way plans show this corner to be center line P.I. station 126+59.7.

On January 5, 1973, we found a brass plug at P.I. station 126+59.7.

We accept this brass plug as being the west quarter corner of Section 6. The State Highway center line alignment has perpetuated the correct location.

We measured 2661.58 feet to the southwest corner and 2659.43 feet to the northwest corner of Section 6.